

Escapes Mid-Atlantic Chapter 20 July 2008

Vol. 21 No. 3

President – Rudi Mager - rudym05@gmail.com
Secretary – Monica Behum - jomonbeh@yahoo.com
Treasurer – Phil Devonshire – phdevon@gmail.com
Newsletter – Cindy Devonshire – cynthia.devonshire@gmail.com

Vice President – Ann Hanks
316 Schroeder Avenue
Perry Hall MD 21128
410-248-3178

From the Prez

Thank you One and ALL for the kind words. I'm feeling great now that they got the arteries open. I really missed attending the rally. I'm sure everything went well. Congratulations to Phil Devonshire on your election as treasurer and to Ann Hanks for your election as vice-president. I'm looking forward to the Sept. rally
Drive Safe.

SKP HUGS,

Rudy

Message from Ann...

Hi Everyone,

We had a great Rally at the Morrison County Municipal Park in Martinsburg. Thank you for reelecting me as your vice president. I want to give a special thank you goes to Barb and John McDonnell who have agreed to be Rally Host next May.

Also, I would like to welcome some new members to our chapter. Those attending the rally were Jim and Dawn Rodgers and Katie and Tom Patterson. New members that signed up at the Gillette Escapade were Bryan and Jane Rose, Diane and Bill Battey and Terry Wise and Beth Skunk. Welcome! I am looking forward to seeing all of you at our next rally in Manheim PA ~ until then.....

Hugs,

Ann Hanks - VP

Treasurer's Hello

Hello fellow members of Chapter 20. I am looking forward to serving the chapter as treasurer. I would appreciate everyone's help in getting this year's dues up to date. If you have not paid your dues, please do it now! **Dues are \$5 per couple, per year.** Send a check made out to **Mid Atlantic Chapter 20** to:

Phil Devonshire

RR#3 Box 206

Wyalusing PA 18853

Hope to get to know more of you in September. See you in Manheim!

Phil Devonshire

Upcoming Rallies

September 19-20-21 Rally is at Outdoor World Pennsylvania Dutch Camping Resort in Manheim Pennsylvania. Full hook ups are \$25 per night. Hosts for this rally are Lois and Bob Boose (717-538-1564). Please call Bill and Lois to make your reservation. A Pot Luck dinner is scheduled for Saturday night.

Susie & Denny Orr – Escapes Chapter Directors are planning to attend our September rally.

2009 Escapade will be in Sedalia, Missouri from May 24-29 at the Missouri State Fairgrounds.

Minutes of Chapter #20 July 17-18-19 2008 Rally

The rally was held in the Martinsburg Community Park in Martinsburg PA. President Rudy Mager was absent from the meeting due to health problems. Ann Hanks, Vice President conducted the meeting, with President Rudy Mager on the speaker phone. Monica Behum Secretary was also present. Ann Hanks opened the meeting at 10:00 A.M. with the Pledge of Allegiance, a moment of silence for our service men and women, keeping us free.

11 rigs in attendance, 22 members present.

Barry and Mary Moien of the nominating committee, stated that Ann Hanks would fill the office of Vice President and Phil Devonshire would take the job of treasurer, no nominations from the floor.

Philip was asked to take a seat with the board, as our present treasurer was not present.. He proceeded to read the treasurer's report, e-mailed from Drew.

A motion was made by J.Thomson to accept the report as read, seconded by J. McDonnell, all in favor. Secretary read the minutes from the May rally. A motion was made by J. Thompson to accept the minutes as read, seconded by B. McDonnell, all in favor. Question from the floor as to where our money goes, which bank? It was explained that we will have an account with the M&T Bank and if anyone would like to check on how much money we have, go on line or ask Phil about it.

Vice President Ann said that it would make it easier if you could pay the rally fee in cash. Drew has sent the check book but Ann had not received it at the time she left to come to the rally. You can make out a check for your camping and dues. Due to Headquarters not having an Escapade on the East Coast, we will have a rally in September. It will be held in Manheim PA at Outdoor World, September 19-20 2008. If you will be attending please let Bill & Lois Boose know. New members and guests were welcomed this weekend. New members were Tom & Katie Patterson and guests were Jim & Dawn Rodgers.

We would like to thank Cindy Devonshire for the great job she is doing on the newsletter, also big thanks to Barry and Mary Moien for doing the nominating.

After the meeting we had a short presentation from Sky-Med.

At the July rally we have adoptions. Joe and Monica Behum adopted Barry and Mary Moien. John and Barbara McDonnell adopted Cindy and Phil Devonshire, Bill and Lois Boose adopted Tom and Katie Patterson and John and Cathy Strausbaugh adopted guests Jim and Dawn Rodgers.

The Pattersons took a group photo after the meeting. A motion was made by L. Boose to adjourn, seconded by B. McDonnell, all in favor.

Time: 10:37 A.M. meeting adjourned.

Submitted by Secretary Monica Behum



Gillette Escapade 2008

Hi Folks --- Thank you for participating on The Row at the 30th Birthday Bash and Escapade in Gillette, WY. This was the largest Row ever before --representing 42 Chapters – 6 Certified Birds of a Feather – and 11 Co-Ops equaling 59 groups – HOORAH! This year The Row, the market, crafts and the floating making were all in the same area making for a very busy Row. We thank Jim & Jo Ellen Gas for representing Chapter #20.

The entertainment beginning with Craig Zablocki (motivational speaker), Jimmy Travis (comedian), Ham-arama, and the final dance party were terrific. And then it was the 4th of July with the Gillette parade – the Escapees float took 2nd place, the history of Escapees slide show along with birthday cake and ice cream, ending the day with the fabulous fireworks! Escapade gathered together many new classes along pre Boot Camp, pre and post HOPs and lots of SKP Hugs.

We hope you will plan to attend the Escapade May24-29, 2009 in Sedalia, Missouri. Look for more information in upcoming Escapees Magazines. Remember Sedalia, MO is just 500 miles from 25 different states. Make your plans to head to Escapade and enjoy the travels to and from. Hope to see you there!

SKP Hugs,
Susie & Denny Orr



Escapade 2008 was great. With 1119 rigs and well over 3,000 people everyone had a good time. We were very busy at the booth on the row talking to a lot of folks and signing up three new members, one for two years. Would have had more, but people were busy with seminars and other activities so forgot to come back. Vendor row was drab in my opinion. Several from last year refused to come this year due to issues with staff. They were big vendors. There will be big changes next year with new directors Harrel and Tommie Sue Hicks coming back on board. As soon as I transfer my pics from camera, I will send them. We are presently at I-80 Truck Stop in Wolcott, Iowa, The largest truck stop in the USA. They are having their annual Big Truck Jamboree. What a crowd, 100 rigs every 10 minutes coming in this place.

Until next time,
Happy Trails.
Jim & Jo Ellen Gass.

Chapter Information

If you need to check on Chapter 20 Activities, please check the Escapee's Website at <http://www.escapees.com/chapter20> or check the voice mail at:

Chapter Voice Mail Information: 888-757-7701 ext. 09020.

Be sure to check out the new editions on the web page, Photo Gallery!

Messages from Members

Walt Francis – “Sonny” Francis Jr. passed away in March 12, 2008. He will be missed. His wife, Thelma, plans to downsize to a smaller rig and keep on camping. We hope to see Thelma at a rally soon. We will be waiting with plenty of SKP hugs for her!

Hi Gang:

Greetings from northwest Az. We have been here in Meadview since April of 07, except for two short trips to Vegas and Valle Verde. This is the longest we have been in one place in 9 years of full time. With the price of gas it does not look like we will be moving any time soon.

We love it up here, very small town, less than 2000 people. We have to go 52 miles, one way, to the nearest Wal-Mart. No traffic lights either. My sister is a nurse practitioner and is opening her own office. I have been helping in the remodeling, I'm the gofer. Joan has a job as a care giver for an 87 year old lady. She takes her shopping and to lunch, feeds her pets and gets paid for it! We have a 50 amp full hook up so don't need to move at all.

Hot here in summer 115 a couple of times, but with %20 percent humidity it's ok. Winter is mild low 50's most days. Down in the 20's at night a couple of times. The sun shines 350 days a year. Hope you all are well. Our e-mail address is ha.be@juno.com, send us a note.

Hugs,
Harry and Joan Bellerby



Hi! Ralph and I are members of the Mid-Atlantic chapter, I don't know if we ever met you. We have only been to a few campouts and can't remember everyone we met. Anyway, we are full-timers now and that is why we haven't been to any meetings in the last year. We are on our way to the Escapade. Really looking forward to it and we will try to catch up with the members of our chapter. If you think the members are interested in our travel, please post this website:

www.fredericknewspost.com/sections/special_sections/the_joneses. I am writing a blog each week about our travels. The Frederick News Post did an article on us last year about our plans to full-time and then we were asked to write about our travels. I also include several pictures, so there will definitely be some from the rally and hopefully the other members.

Take care,
Gisela & Ralph Jones

Editor's note: Check out their blog, it is awesome!

Favorite Places



This is a photo and notes taken from the blog of [Gisela and Ralph Jones](#):

On Monday we went to St. Louis, the Gateway to the West, to see the Gateway Arch. The Arch was built in 1965 as part of Jefferson National Expansion Memorial. Thomas Jefferson very much encouraged the expansion of the United States to the West. In the 1800s, St. Louis was the place where many settlers were outfitted before heading west. I read that Lewis and Clark were outfitted there in 1803 for their famous exploration of the Louisiana Purchase. Going up on the Arch was quite an experience. A small closed-in cubicle took us to the top – 630 feet high. The cubicle was sort of like a Ferris Wheel gondola, only closed in and going up on rails. It is definitely not a trip for someone who is claustrophobic. Even the area on the top was small and narrow, but the view over the city and the Mississippi was breathtaking. The architecture and engineering that went into building the Arch can boggle your mind – just amazing. With this trip to St. Louis I fulfilled a longtime dream of mine. The Gateway Arch has always fascinated me and has been one of the things in America I wanted to see.

Have a favorite place you visited? Send information and picture to cynthia.devonshire@gmail.com

Snippets of News about Members

President **Rudy Mager** is recovering nicely from heart angioplasty to clear blockage. He is going to behave this time, he says! VP **Ann Hanks** and husband **Ira** are keeping busy, working. They have a new park model. Check out their new address. **Monica** and **Joe Behum** are enjoying their summer in the north. Monica is busy as always, beading. **Lois Boose** is still beading as well. She is making some beautiful beaded watches now. Lois is planning on teaching for two more years before she retires. **Cindy** and **Phil Devonshire** had a great winter traveling through the south and west. They visited as many SKP or Co-op parks as they could fit into their route! **John** and **Cathy Strausbaugh** are planning on visiting Las Vegas in September. Put a quarter in the slot machine for us!! **J.M. Thompson** did a GREAT job as auctioneer at the rally. He and Monica convinced people to part with \$109.25! **Ruth** is looking great. **Dick** and **Pat Tracy** are traveling through Alaska about now. **Bob** and **Patty Anderson** just returned from traveling to Sturgis KY. **Barb** and **John McDonnell** have been busy buzzing around the country side, not spending a lot of time at home. They have just recently visited the Poconos in PA. They will be attending an FMCA rally in September. **Beryl** and **Jim Eichlin** were also at the July rally and looking great! Check out their picture on the Chapter 20 Photo Gallery. New members **Tom** and **Katie Patterson** are returning home after seven months on the road. **Katie** took great pictures for us at the July Rally. We were also happy to meet new members **Jim** and **Dawn Rodgers**. Hope to see them back in September. **Jim** and **Jo Ellen Gass** did a great job representing us on the Row at the Gillette Wyoming Escapade. They signed up three new memberships. They were **Bryan** and **Jane Rose**, **Diane** and **Bill Battey** and **Terry Wise** and **Beth Skunk**. Welcome! And we hope to see them all at the September Rally. **Susie** and **Denny Orr**, **Escapes Chapter Directors** are planning to attend our September Rally. VCR'S **Betty** and **Bill Bear** have continued traveling through the west after they attended the Gillette Escapade. **Marti** and **Drew Moehlau** are full timing and traveling in the west after working at the CO-OP in Benson AZ.

Recipe Corner

Breakfast Casserole

9 eggs
3 slices of white bread
2 cups milk, cream or half & half
(used milk for rally)
1 lb sausage
1 large can mushrooms
dash pepper
1 lb grated sharp cheddar cheese

Cook sausage, drain and set aside
Beat eggs break up 3 slices of bread & fold into egg mixture
Add grated cheese, sausage
Blend well & pour into 9x13 greased baking dish -
Cook uncovered at 350 for 40-45 minutes
Can be prepared night before just cover and refrigerate (done for rally)
Submitted by Donna Norman

Safety Issue

Met amphetamine cooks are buying propane tanks from the exchanges at Wal-Mart, Kroger, and emptying them of the propane gas. Then they fill the propane tanks with anhydrous ammonia, which they now have a recipe to cook Met amphetamine. After they are finished with the propane tanks, they return them to the store. The stores refill the tanks with propane gas, unknowing to them the improper substance that was inserted in the tanks and sell them to their consumers. Anhydrous ammonia is very corrosive and weakens the structure of the tank. It can be very dangerous when mixed with propane gas and hooked up to a grill, recreation vehicle, etc. You should inspect the propane tank for any blue or greenish residue around the valve areas. If there are evidences of these substances, do not purchase the propane tank and advise the vendor of your findings.

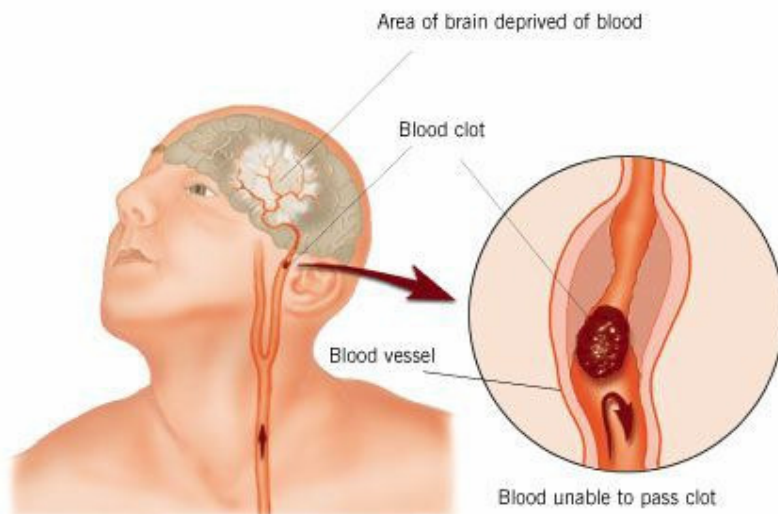
The information was researched, and you should check out the following website for more details. They also have pictures for you to view. Click on the link to the right that reads Safety Issues

<http://www.npga.org>

Safety and Health issues were from Al Groft. Thanks, Al!

Health Issues

Blood Clots/Stroke - New indicator is found: The Tongue



**STROKE: Remember
The 1st Three Letters....**

S.T.R.

Please read:

STROKE IDENTIFICATION:

During a BBQ, a friend stumbled and took a little fall - she assured everyone that she was fine (they offered to call paramedics)she said she had just tripped over a brick because of her new shoes.

They got her cleaned up and got her a new plate of food. While she appeared

a bit shaken up, Ingrid went about enjoying herself the rest of the evening
Ingrid's husband called later telling everyone that his wife had been taken to the hospital - (at 6:00 pm Ingrid passed away.) She had suffered a stroke at the BBQ. Had they known how to identify the signs of a stroke, perhaps

Ingrid would be with us today. Some don't die.... they end up in a helpless, hopeless condition instead.

It only takes a minute to read this...

A neurologist says that if he can get to a stroke victim within 3 hours he can totally reverse the effects of a stroke... totally. He said the trick was getting a stroke recognized, diagnosed, and then getting the patient medically cared for within 3 hours, which is tough.

RECOGNIZING A STROKE

Thank God for the sense to remember the '3' steps, STR. Read and Learn! Sometimes symptoms of a stroke are difficult to identify. Unfortunately, the lack of awareness spells disaster. The stroke victim may suffer severe brain damage when people nearby fail to recognize the symptoms of a stroke. Now doctors say a bystander can recognize a stroke by asking three simple questions:

S* Ask the individual to **SMILE**.

T* Ask the person to **TALK and SPEAK A SIMPLE SENTENCE** (Coherently)
(i.e. It is sunny out today)

R* Ask him or her to **RAISE BOTH ARMS**.

If he or she has trouble with ANY ONE of these tasks, call 999/911 immediately and describe the symptoms to the dispatcher.

New Sign of a Stroke ----- Stick out Your Tongue!

NOTE: Another 'sign' of a stroke is this: Ask the person to 'stick' out his tongue.. If the tongue is 'crooked', if it goes to one side or the other, that is also an indication of a stroke.

Links for RVers

by Nick Russell, Editor of The Gypsy Journal

Here are some good websites that many RVers find interesting and useful.

www.gaspricewatch.com – Monitors gasoline prices nationwide

www.dieselboss.com – Monitors both gas and diesel fuel prices nationwide

www.rvservice reviews.com – Readers contribute reviews of good and bad service facilities

www.rvparkreviews.com - Readers contribute reviews of RV parks nationwide

www.byways.org – A great guide to exploring America's scenic highways and byways.

www.festivals.com – If there is a festival going on anywhere in America, you'll find it listed here

www.museumstuff.com – A valuable resource for museum lovers

www.nps.gov – The National Park Service main website, with links to National Parks, Historic Sites and Monuments nationwide.

www.rvdoctor.com – If your RV is sick, you can learn how to make it well here

www.rvia.org – The website of the Recreational Vehicle Industry Association, loaded with info on the RV industry

www.roadtripamerica.com – Filled with RV travel tips, destinations, funny signs, and other helpful information

www.kbb.com – Before you buy or sell your car or truck, check the Kelly Blue Book

www.hmdb.org – The Historical Marker Database lists historical markers nationwide

www.infoplease.com – Online dictionary, encyclopedia, almanac, thesaurus, and more

www.casinocamper.com – List of casinos where RVers can park, as well as gaming information

www.aitaonline.com/Info/Low%20Clearances.html#California%20Low%20Clearances – List of low clearance

and bridge heights on major and secondary highways

www.roadfood.com – Guide to neat restaurants from burger shacks to rib joints

www.tripadvisor.com – Loaded with information on attractions and destinations across the country

www.roadsidepeek.com – Guide to interesting road trips, highway curiosities, and attractions.

www.legendsofamerica.com – Fun website for nostalgia and history buffs

www.weirdus.com – Haunted locations, ghost tales and other oddities

www.forttours.com – Guide to historic forts

www.worldslargestthings.com – If its big, it's listed here

www.milebymile.com - Road maps, road conditions, and highway RV travel itineraries

www.us-highways.com – Guided to US numbered highways

www.usacarry.com – Guide to state by state firearms carry laws

www.volunteer.gov – Lists thousands of opportunities to volunteer nationwide

Garfield on the oil crisis



A lot of
folks can't
understand
how we

came to have an oil
shortage here in our
country. Well, there's
a very simple answer.
Nobody bothered to
check the oil. We just
didn't know we were
getting low.

The reason for that
is purely geographical.
Our oil is located in
Alaska, California
Coastal Florida, Coastal
Louisiana, Kansas,
Oklahoma,
Pennsylvania, and
Texas.

**Our DIPSTICKS are
located in Washington
, DC!!!**

Any Questions???

NO? Didn't think So.